



# KRUPANIDHI COLLEGE OF PHARMACY

(Approved by AICTE & PCI, New Delhi, Affiliated to RGUHS, Bengaluru)  
Accredited with Grade 'A' by NAAC, Bengaluru | ISO 9001 - 2015 Certified  
12/1, CHIKKA BELLANDUR, CARMELARAM POST, VARTHUR HOBBI, BANGALORE - 560 035



*6.2.2 The functioning of the institutional bodies is effective and efficient as visible from policies, administrative setup, appointment, service rules and procedures, etc.*

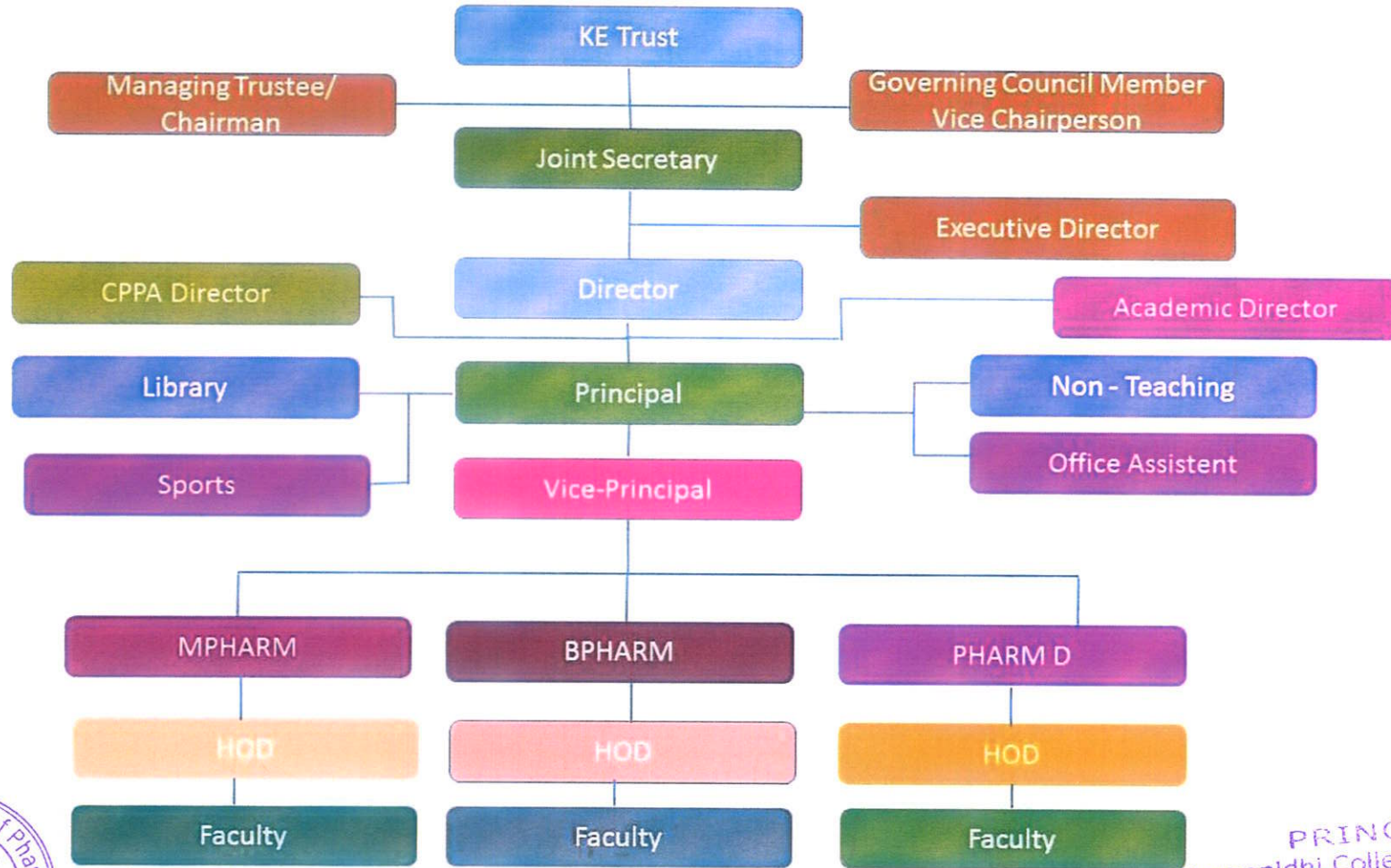
## *Organogram Chart*



# KRUPANIDHI COLLEGE OF PHARMACY

(AICTE Approved | ISO 9001-2015 Certified)

## ORGANIZATION CHART FOR ADMINISTRATION



PRINCIPAL  
Krupanidhi College of Pharmacy  
Chikkabellandur, Carmelaram Post,  
Varthur Hobli, Bangalore - 560 035

10/10/22